



FEATURES:

- 9' main floor ceiling
- Side entrance to unfinished basement
- Double garage attached
- Two-tone kitchen cabinets to ceiling
- Quartz countertops
- LVP flooring on main floor
- Open to below entrance
- Bedroom and full bathroom on main floor
- Spice kitchen upgrade option
- 28 pocket lot

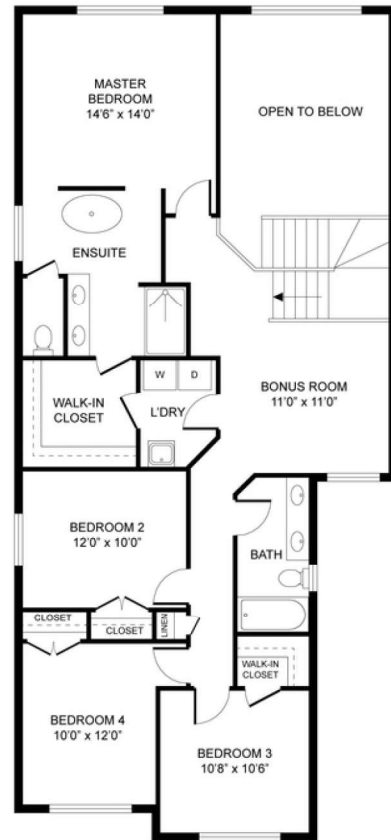
NOTES:

AUGUSTA

2300 SQFT | **5**  **3** 



MAIN FLOOR



UPPER FLOOR



www.happyplanethomes.com
info@happyplanethomes.com
 8098 Kiriak Link SW, Edmonton, Alberta