



FEATURES:

- 9' ceiling height
- Main floor bedroom and full bathroom
- Double garage attached
- Two-tone kitchen cabinets to ceiling
- Quartz countertops
- Spice kitchen
- LVP flooring on main floor

NOTES:

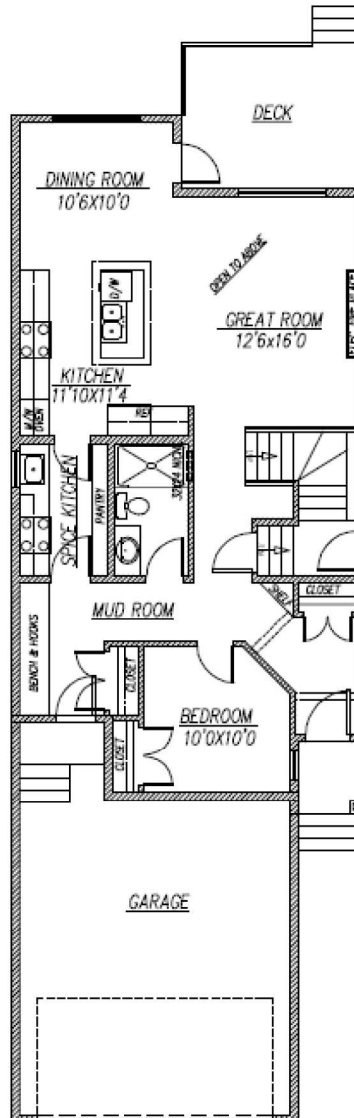
Hawthorn

2030 SQFT

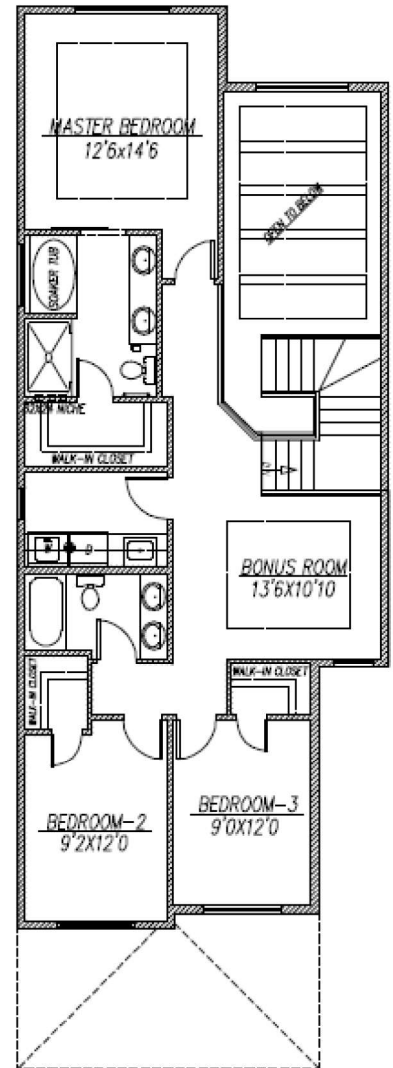
4



3



MAIN - 1006 SQFT



UPPER - 1024 SQFT