



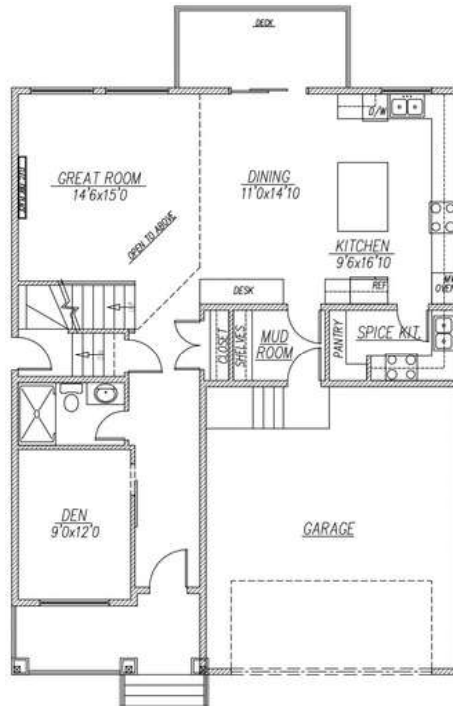
OASIS

2370 SQFT | **3**  **3** 

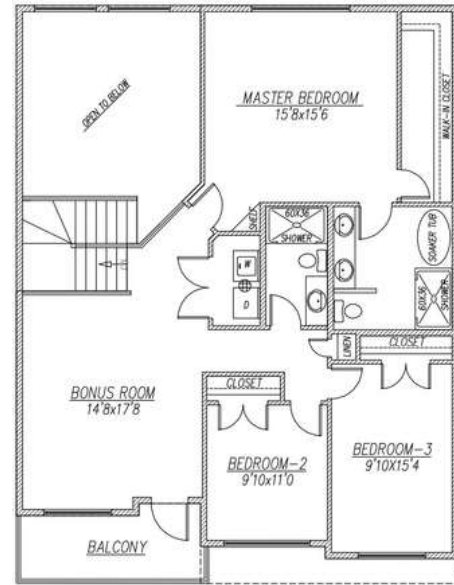
FEATURES:

- 9' ceiling heights
- Side entrance to legal basement
- Double garage attached
- Two-tone kitchen cabinets to ceiling
- Quartz countertops
- LVP flooring on main floor
- Spice kitchen
- Open to below great room
- Den and full bathroom on main floor

NOTES:



MAIN - 1130 SQFT



UPPER - 1240 SQFT



www.happyplanethomes.com
info@happyplanethomes.com
 8098 Kiriak Link SW, Edmonton, Alberta



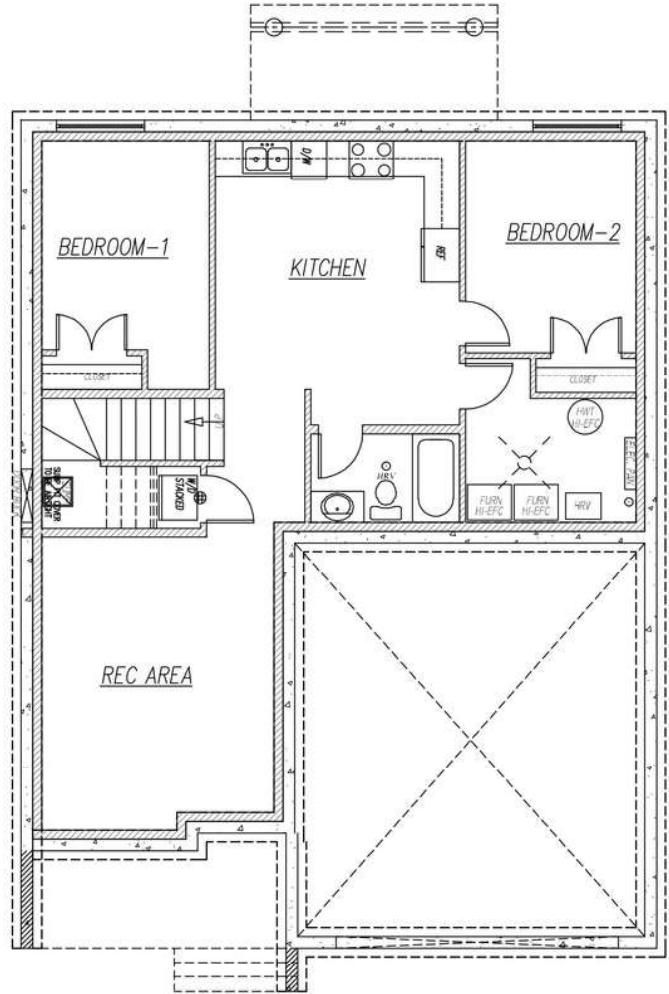
OASIS

RENTAL SUITE BASEMENT

FEATURES:

- 9' ceiling heights
- Side entrance to legal basement
- Double garage attached
- Two-tone kitchen cabinets to ceiling
- Quartz countertops
- LVP flooring on main floor
- Spice kitchen
- Open to below great room
- Den and full bathroom on main floor

NOTES:



943 SQFT



www.happyplanethomes.com
info@happyplanethomes.com
 8098 Kiriak Link SW, Edmonton, Alberta